



GDAS NEWS

PO Box 71 Goulburn NSW 2580 ~ www.artsociety.goulburn.net.au ~ goulburnartsociety@gmail.com

Next Meeting

Thursday
13th May, 2021
11am

at the ART STUDIO
Cnr Combermere &
Bourke Sts Goulburn

GOULBURN & DISTRICT ART SOCIETY INC.

PO Box 71, Goulburn NSW 2580

www.artsociety.goulburn.net.au

goulburnartsociety@gmail.com

[www.facebook.com/
goulburnanddistrictartsociety](https://www.facebook.com/goulburnanddistrictartsociety)

President:

Helen De Jonge 0412 185 019

Vice President & Editor:

Alex Mortensen 0434 286 311

Secretary:

Lesley Whitten 0417 240 595

Treasurer:

Alan Whitten 0439 410 733

Ass't Treasurer: Margaret Dwyer

Minutes Secretary: Julia Laybutt

Ass't Secretary: Sue Maas

Ass't Minutes Secretary: Sue Maas

Membership Secretary: Sue Maas

Publicity: Vacant

Web Master & Graphic Designer:

Katya Mortensen

Workshop Co-ordinator:

Helen De Jonge

Public Officer: Bryce Ronning

Facebook Co-ordinator: Vacant

Committee: Amanda Zurek,
Greta Fennamore



Pastel Workshop
tutored by Grace
Paleg on 27th March
2021. Photo by Greta
Fennamore.

PRESIDENT WRITES

Hello Everyone,

I would like to give a big thank you to Sue Maas and Margaret Dwyer for their great work and stepping up while our Secretary, Lesley and Treasurer, Alan were away on holidays. Thank you both for your hard work.

It was a very good and informative workshop doing portraits with Grace Paleg. I could see everyone enjoyed the day and learnt lots of techniques, thanks to Grace.

Just to remind everyone Amanda Zurek is doing a day workshop in pastels. It is called "Mark Making" and sounds very interesting and exciting. It will be on Saturday 24th of this month, so let me know if you are interested as it is only 2 weeks away.

Hope everyone is putting paintings into the Crookwell Exhibition.

Happy painting.

Helen

IN THIS ISSUE

AUSTRALIAN SCROLLSAW EXHIBITION 14-16 MAY 2021

GDAS WORKSHOPS

GRACE PALEG'S PORTRAIT IN PASTEL WORKSHOP REPORT

UPCOMING PASTEL WORKSHOP WITH AMANDA ZUREK

OTHER ART EVENTS TO PARTICIPATE

AND MORE...

GDAS ART EXHIBITION IN CONJUNCTION WITH AUSTRALIAN SCROLL SAW NETWORK CRAFT SHOW & OTHER GROUPS

*Australian
Scrollsaw
Network*



ANOTHER OPPORTUNITY FOR US TO DISPLAY AND SELL OUR ART WORKS

2021 Exhibition: May 15th & 16th, 2021 at the Veolia Centre, Braidwood Road, Goulburn, NSW

ENTRY FEE: \$5 for as many entries as you bring along. We expect to have plenty of space.

YOUR ART WORK ENTRIES: no time limit for their age but try to bring some of your newer works please.

DELIVER AND SET UP: to Veolia Centre, Friday, 14th May, 10am - 12pm, and please help set up stands, collect works and hang them from 12pm. Please bring works as early as possible. Exhibitors will be given labels to fill in with their name, title of work, media and price. Attach it to the bottom right-hand corner. Your works must be properly framed and presented. No size limits. All works entered will be hung if possible or hung during the exhibition to replace any works sold and removed by buyers.

DUTIES: Please put your name on the duty roster to help run the exhibition on Saturday 15 and Sunday 16 May.

EXHIBITION TIMES: 10am to 4pm on Saturday 15 and Sunday 16 May.

COLLECTION OF UNSOLD WORKS: 4pm Sunday 16 May. Please do not collect your works before closing time.

The committee has accepted this opportunity for our members to participate in this exhibition.

It is expected to be a very interesting exhibition that will attract large numbers of visitors. The

Scroll Saw Network have a very large following. Apart from the local Scroll Saw crafts people and Canberra exhibiting their works, other local art and craft groups have been invited to exhibit. The GDAS should be one of the larger exhibitors of works and we should make the most of it. Refreshments will be available for visitors to buy.

By helping to make this show a success, it is expected that it may become a regular annual event of which we will be part. It is very important to us, as artists, to have events at which we can exhibit and sell our works.

Please spread the word about this exhibition to your friends, relatives and other contacts. One way to do this is to forward this newsletter on to them.

To see what scroll saw works are like, go to:

www.scrollsawaustralia.com



One of the artworks from ScrollsaAustralia.com latest exhibition 2018.

RECENT THURSDAY PAINTING DAY



Arts Law Centre of Australia
The national community legal centre for the arts

For your interest. Information about [copyright law](http://artslaw.com.au) with regard to artists working in Australia.
artslaw.com.au

GDAS WORKSHOPS

We have a number of workshops proposed for this year. These include ones to be tutored by some GDAS members as well as professional tutors.

April 24

Amanda Zurek: Mark Making with Pastels.

\$10 attendance fee for members.

This will be very useful for members to either learn new skills in applying pastels or brush up on old ones.

May 29

Katya Mortensen: Drawing Portraits – Attention to Details. Graphite and Watercolour.

This is a follow up to Katya's workshop at last year's one in November. Portraits have become a major part of Katya's art.

August

Helen De Jonge: Watercolours.

Suitable for beginners and more experienced artists. Helen is an experienced watercolourist and has much to share.

September

Stavros Papantoniou: Loose Acrylics.

Stavros is an artist of long experience and often shares his knowledge and skills with members who attend on Thursdays.

Other Workshops

Helen is making enquiries with Chan Dissanayake and Helen Cottle to see if they can tutor workshops for us this year.

All the workshops will be from 10am to 4pm and held at The Art Studio unless it is considered to be too cold, in which case they will be held elsewhere. Participants will be advised.

Precise dates will be set for the various workshops.

Meanwhile please add your name to the workshop lists at The Art Studio as soon as possible or contact Helen De Jonge on 0412 185 019.

**GDAS IS A COVID-19 SAFE PLACE
STAY SAFE!**

EDITORIAL

Another busy and fruitful time is coming up for our art society. Our participation in the Scroll Saw Exhibition in May will involve effort by our members in preparing and selecting works to enter and then the jobs of setting up, duty during the weekend and pulling down on the Sunday. Our GDAS members should ensure they get right behind this exhibition for if it is a successful one, as it should be, it could well go ahead in future years and thus give us another regular opportunity to exhibit and sell our works. Exhibitions are only as successful as our members make them, so please do your part.

We still don't have any word from the Council into just what will happen to our current venue and what they will offer us to replace it. The sooner we know, the better it will be as it makes it difficult to plan into the future. Of course, we know there is no point in doing things to make our current place more "liveable" for us and that means we will probably be enduring another cold winter in it. This situation is most unsatisfactory for all members and particularly for those who want to make good use of our premises.

Regardless of this, however, we are still going to be active with our meetings, Thursday painting days and workshops. If necessary, the workshops will be held elsewhere to have better comfort.

GUEST SPEAKER AT MAY MEETING



Giselle Newberry, Coordinator Community Arts & Communications, Southern Tablelands Arts (STARTS) will be our guest speaker at the May 13th meeting at 12.30pm. Put it in your diary to attend that meeting to hear what Giselle has to tell us.

Do you know of someone who would be an interesting guest speaker for one of our meetings? If so, please let us know and we shall endeavour to arrange it.



Silo art at
Tumby Bay.
Photo by
Lesley Whitten.

GRACE PALEG'S PORTRAIT IN PASTELS WORKSHOP

Grace was warmly welcomed by those who participated in this workshop. Two of our members, Helen and Alex, took the easy path choosing to be the models for the day. They found it quite relaxing and certainly a great time for contemplation as they held their poses for the duration. One could see they were very relaxed - were they seen actually nodding off at times? Grace divided the participants into two groups - with a model for each. Throughout the day she would demonstrate for one group and then the other. All the workers gained much as they watched Grace's slow and careful application of the pastels. She is a great believer in the use of her fingers and palms to spread pastel rather than applying it directly. As well she steps back repeatedly after applying the smallest of touches to her work. After each demonstration step, Grace then actively checked on her students' progress. Stavros stood out by finishing his portrait of Alex in the afternoon and then doing a rapid one of Helen.

Although a one day workshop, Grace needed two nights accommodation because of the distance from her home at Batemans Bay. Katya and Alex again hosted Grace thus saving art society expenditure on living expenses for our tutor.



WELCOME TO NEW MEMBER

We were pleased to accept Donald De Jonge as a new member at the April meeting. Donald is a highly skilled woodturner so he will be bringing a different form of art to our exhibitions.

GDAS WORKSHOPS

MARK MAKING AND COLOUR SENSITIVITY: PASTEL WORKSHOP

Tutor - Amanda Zurek

Saturday 24th April, 10am – 4pm
Art Studio, Cnr Combermere and Bourke St

The aim of this workshop is to get creative, experiment, and have fun making marks with pastel.

You will be introduced to various formal techniques of mark making and colour sensitivity, however, you will be encouraged to approach the exercise intuitively. This is where you will grow your own unique visual language. You will be creating variations of the same still life object(s) by rendering relatively simple forms. This will allow you to concentrate on the mark making process without getting caught up in too much detail regarding the initial composition sketch..... Here are some suggestions for things to draw... fruit, vegetables, coffee mug, cup and saucer, vase and flowers, bottles. Your mark making exercise will be informed by using the elements and principles of design.

You will be working from a photographic image of your still life object(s). This will be used as a loose reference, so make sure the object(s) shows the relevant information you may need, such as shadow drop and areas of highlight, maybe some reflection if desired. I will also have some images available should anyone need a reference.

Please bring along any soft and hard pastels that you have as well as a variety of papers (smooth, rough, coloured) that you can experiment on, as different papers will give different textural results and influence how you manipulate your pastels.

At the end of the day, you will be able to take home your pastel paintings and drawings that express your own hand.

If you have any further questions please feel free to contact me:

amandazurek11@gmail.com

Mob: 0491 482 640

Please contact Helen De Jonge to secure a place in this class. Ph: 0412 185 019



WHAT YOU NEED TO BRING

Photo or printout of reference images (colour and black & white)

Pastels – any you have: hard, soft, pencils, conte, charcoal (willow, compressed)

Easel (standing or desk)

Masking tape

Kneadable and hard plastic erasers

Paper – bring a variety of surfaces (sanded, smooth, coloured)

Handwipes or towel

Scissors

Ruler

Dust catcher (aluminium foil, scrap paper or cardboard)

Fixative and mask (optional)

Scrap paper (for testing pastel on)

Apron

MATERIAL SUGGESTIONS AND ALTERNATIVE OPTIONS

Please bring what you have available. If there are things on the above list that you do not have, I am sure we can all help each other out.

The size of your drawing/painting surface will range downward from an A4 size (being the largest that you would want to go to) as you will be creating multiple variations of your image in relatively quick succession. You will therefore be able to divide larger sheets of paper accordingly on the day.

softpastels.com.au - This is an online store located at Adamstown NSW that stocks a great variety of quality pastel products and papers.

Best Buys (used to be Dimmeys) Cnr Auburn and Montague St usually stocks pastels and pastel paper pads as do some of the other bargain stores around town.

Bunnings and Mitre 10 have a range of sandpaper sheets that you can use to draw on with pastel (wet and dry grades, furniture sand paper). Finer to medium grades of sandpaper are good options.

Gesso can be used on any surface (applied roughly and directional) to apply pastel to.

Watercolour paper and canvas will also take pastel.

S O C I A L D I S T A N C I N G I S I N P L A C E



A TEASE OF MATISSE: A NEW EXHIBITION FOR NSW

By Tallis Boerne Marcus

After initially studying law, Henri Matisse decided to move into the arts and the world has been thanking him for it ever since.

You can see the true impact of his decision from this November to March 2022 when the Art Gallery of NSW hosts Matisse: Life & Spirit, Masterpieces From the Centre Pompidou.

Matisse led the Fauvist movement and his style has an unmistakable punch of bold colour. The exhibition will host over 100 artworks produced across six decades, allowing you to see his style define itself, then constantly evolve. Rather than just a collection of paintings, the exhibition will take you on an emotional journey through Matisse's life and art, allowing you to immerse yourself in the history and culture he lived, created and influenced.

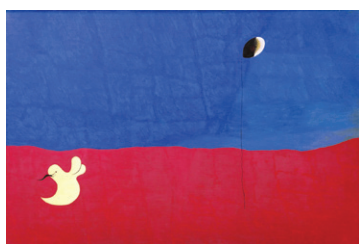
Matisse Alive will be held alongside the exhibition from October 21, celebrating four modern artists (Nina Chanel Abney, Sally Smart, Angela Tiatia and Robin White) who display Matisse's influence in their work.

Matisse: Life & Spirit will run from 20 November 2021 to 13 March 2022.

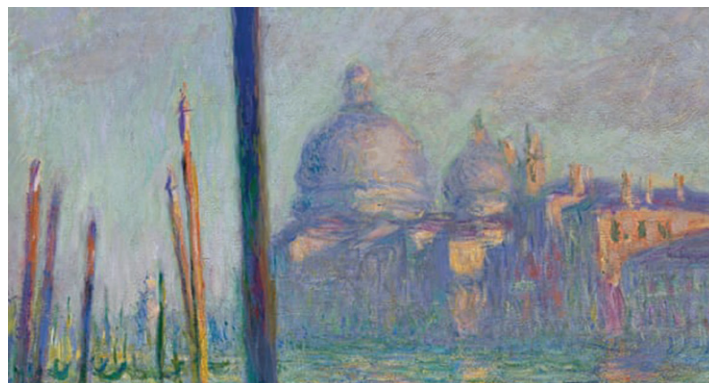
Source: www.exploretravel.com.au

JOAN MIRO VISION

Returning from city life in Paris in 1927, Miro was inspired by wide, empty spaces and red soil of countryside near his grandfather's farm in Catalonia. The artist was reluctant to identify the objects in the image, leaving their interpretation open: 'A picture must be fertile. It must give birth to a world. Whether you see it flowers, people, horses, it matters little, so long as it reveals a world, something alive.'



Joan Miro. Paysage [Landscape], 1927. NGA



MONET, Renoir and DEGAS Paintings to Travel to Melbourne for NGV Impressionist Exhibition

More than 100 French artworks to appear alongside paintings by Australian impressionists

More than 100 impressionist masterworks, including 19 Monet paintings, will travel to Melbourne from the Museum of Fine Arts in Boston this year as part of the National Gallery of Victoria's Winter Masterpieces exhibition.

NGV director Tony Ellwood announced the blockbuster exhibition on Monday as part of the gallery's unveiling of its 2021 program – an announcement delayed by two weeks due to Melbourne's snap five-day lockdown in February.

Along with the Monet works, paintings from Pierre-Auguste Renoir, Edgar Degas, Camille Pissarro and Mary Cassatt will headline French Impressionism, which is scheduled to open at the NGV International in June.

Seventy-nine of the paintings have never been exhibited in Australia before.

"To stage an exhibition such as this is a true coup for Melbourne and Australia under normal circumstances, but to enable the calibre of these loans to travel here in a complex environment is a result of considerable logistical planning and incredible collaboration with our fantastic colleagues at the Museum of Fine Arts, Boston," Ellwood said.

The exhibition will traverse the trajectory of impressionist thought and practice in 10 sections, focusing on the preferred subjects and key influences of the period, from the painters of the Barbizon school's influence on Monet's outdoor work, to still-life paintings and street scenes.

Source: www.theguardian.com



GOULBURN WORKERS CLUB ANNUAL ART PRIZE - IT'S ON AGAIN

8th, 9th, 10th
October, 2021
10am to 4pm

OPENING NIGHT

Friday 8th October, 6pm

ENTRIES CLOSE

Thursday 30th September

DELIVERY DATES

Saturday 2nd October and
Sunday 3rd October,
10am to 12 noon at The Art
Studio, Cnr Combermere &
Bourke Sts, Goulburn

Wednesday 6th October, 10am to 12 noon at the Goulburn Workers Club Auditorium

HANGING DATE Wednesday 6th October, from 10am

COLLECTION OF WORKS Sunday 10th October, 4pm

ENTRY FORMS will be available online at the GDAS website from late March, 2021

Please note the extra two days being made for delivery ie at the GDAS Art Studio on the Saturday and Sunday prior to the exhibition. This will make it easier for members who work during the week and also for some distant exhibitors who may prefer to travel to Goulburn during weekends to deliver their works.

It is expected that exhibiting GDAS members will be on the rosters to assist in the collection of works, hanging and pull-down, opening night, and duties.

When creating your works, please ensure that you follow the guidelines for presentation of works including size of exhibits, framing, labelling. Please ensure that you do not infringe another person's copyright such as a photographer's copyright of a photo that you may like to paint. Make it a point to read the Conditions of Entry carefully. All too often, the members hanging the works have had to restring works using D-hooks and adequate cord. There have even been occasions when works have been so poorly framed they have fallen to the floor.

OTHER ART EVENTS

CALL FOR ENTRIES: 2021 BOWRAL DRAWING PRIZE

Presented by the Bowral & District Art Society and Bowral Art Gallery (BDAS)

Entry form & fees deadline:

4pm on 7 July 2021.

Works to be delivered

Wednesday 21 July between 10am to 1pm to the Bowral Art Gallery, 1 Short Street, Bowral.

For further enquiries please contact the BDAS office on **4861 4093** or office@bdasgallery.com

Entry forms are available at bdasgallery.com



THE YANCOAL 2021 SINGLETON ART PRIZE

A Painting & Drawing Show
Presented by
the Rotary Club
of Singleton on
Hunter

Entry Form, terms and conditions see at <http://singletononhunterrotary.org.au/singleton-art-prize/>

Entry Form Closing date Friday 2nd July 2021.

Deliveries of art works 27/28 July 2021.

Opening Night & Winners Announced Friday 30th July 2021.

Collection of unsold works Wednesday 4th August 9am to 4pm.





Source: QuotesIdeas.com

OUR SPONSORS

The GDAS has numerous sponsors who give us a variety of forms of sponsorship that is of great assistance to the running of our organisation. We thank them all.



**THE WORKERS
SPORTS
COUNCIL**



www.ozartfinder.com



**ANDREW LIN
DENTIST**



Goulburn Post

OTHER ART EVENTS

THE LAND WE LOVE EXHIBITION AT CROOKWELL ART GALLERY

Interested GDAS members and readers are invited to enter works in this exhibition.

As part of the Crookwell Potato Festival, the Gallery will be holding "The Land We Love Exhibition" over the weekend of 16 - 18 April 2021 in the Crookwell Art Gallery.

This will be an all mediums art show, limited to 3 entries per artist.

The Official Opening will be held from 5pm on the Friday evening 16 April with a \$2 entry fee. Our local Council representative, Pam Kensit will be our guest speaker. Drinks & nibbles will be provided under Covid safe conditions. We look forward to seeing you there.

Please download the entry form at

www.crookwellartgallery.com/whats-on



THURSDAY PAINTING DAYS ARE NOW ON

**YOU MUST BE
COVID SAFE WHEN
ATTENDING**

**BRING YOUR OWN
COFFEE/TEA MUG
PLEASE SIGN IN**

**VISITORS ARE
ALWAYS WELCOME
BRING AN
INTERESTED FRIEND
TO A THURSDAY
PAINTING DAY
ENCOURAGE
PEOPLE
TO JOIN GDAS**



EXHIBIT & SELL YOUR ARTWORKS AT OZARTFINDER

Free to exhibit. No joining fee.
Easy steps to register and show
your art to wider public!
One of the best sites to sell
your art online.

www.ozartfinder.com

PAYMENTS

BDCU Alliance Bank, BSB 802101 Acc 100075612
Reference: Surname + Initials
Alternatively post a cheque to
The Treasurer, GDAS, P.O. Box 71 Goulburn NSW 2580